



# CAPABILITY STATEMENT



**Gore Earthmoving Pty Ltd**

ABN 34 162 713 091

48 Town Common Road

Goondiwindi QLD 4390

T | 07 4671 4911

[goreearthmoving.com.au](http://goreearthmoving.com.au)



*"Professional service, personal approach - from concept to creation"*

# OUR COMPANY



*"Gore Earthmoving's sizeable capacity and professionalism make them an easy choice for our business. We have come to value their ability to retain a personal touch and attention to detail in equal measure." - James Duddy - Duddy Management Pty Ltd*



## About Gore Earthmoving

**Gore Earthmoving Pty Ltd has built a reputation for specialising in project delivery services to the agricultural, civil and mining construction sectors throughout metropolitan, regional and remote areas of Queensland, New South Wales and beyond.**

Gore Earthmoving provides exceptional service and confidence to our external stakeholders by delivering safety, quality, and productivity best outcomes.

Our experienced and personal approach to project delivery ensures we deliver on time solutions at cost effective rates. Gore Earthmoving prides itself on the provision of quality equipment to deliver progressive and wide-ranging earthmoving services. Our commitment to owning a diverse fleet of equipment and full service facilities, allows the company to operate self-sufficiently, especially when working in remote areas to ensure minimal interruptions to the project at hand.

Gore Earthmoving has fully integrated the Navman Wireless GPS fleet management and tracking system on all heavy earthworks machinery and transport vehicles in our fleet. Navman allows accurate charging of production time. The system can identify when equipment is sitting idle or when it is in production, keeping a full computer log of the times, which means that all billable time is accurate and accounted for.

Trimble GPS guidance and control increases the accuracy and efficiency of plant, resulting in improved production. GPS technology also has the ability to input a clients plan from the design team to the machine for automatic grading, surveying and alignments. This ensures the accuracy of equipment when constructing your design.



# OUR VALUES



*"They have the equipment and the highly skilled team necessary to carry out entire projects safely and efficiently." - James Duddy, Duddy Management Pty Ltd*



## Our Values



# PROJECT PACKAGE SOLUTIONS

## Agricultural Construction:

- Feedlot construction, development, expansion and maintenance.
- Irrigation developments and major redevelopments including clearing, construction of levee banks, supply channels, return drains, land levelling, field plumbing, water storage and the construction of ring tanks.
- Continued maintenance of irrigation developments.
- Scrub pulling, stick raking, blade and offset ploughing.
- Gravel road construction.

## Civil Construction:

- Road building including road formation, drainage and gravel sheeting works.
- Construction of building pads through to full subdivisions.
- Site preparation, bulk and detailed earthworks.
- Airstrip construction.

## Mining Construction:

- Construction of raw water ponds, environmental dams, sedimentation ponds, lease pads, gravel roads and tailings ponds.
- Rehabilitation including contour seeding, pre-strip, water management and drainage.
- Many of these projects are required to meet design and engineering specifications.

## Heavy Haulage:

- New Fleet
- Four (4) sets of Road Train Side tippers for works - loading and carting gravel, rock or other material. We can also supply a range of materials when required.
- Low loaders to 65 Tonne payload capacity.
- Potable food grade certified water tanker
- Raw water tankers.
- Tilt slide tray.
- Relocation of company machinery between projects as well as transporting machinery for external clients.

## Dry Hire:

- Dry hire of a range of equipment is available including rollers, compactors, loaders, dump trucks, water trucks, water tankers, jack up quick fill water tower, pumps and traffic lights.



*"Professional service, personal approach -  
from concept to creation"*

# OUR FLEET



## SCRAPERS

- 2 X CAT 623G Scraper
- 4 X CAT 627G Scraper
- 2 X CAT 637G Scraper



## DOZERS

- 1 X CAT D8T Dozer
- 1 X CAT D8R Dozer
- 2 X CAT D9T Dozer



## TRACTOR & BUCKET

- 1 X 520 Versatile & Bucket
- 1 X 535HD Case & Bucket
- 2 X New Holland T9060 & Bucket



## EXCAVATORS

- 1 X SK135-SK 15 Tonne Excavator
- 1 X SK330-10 35 Tonne Excavator
- 1 X SK330-08 35 Tonne Excavator



## GRADERS

- 1 X CAT 140M Grader
- 2 X CAT 150M AWD Grader



## SIDE TIPPERS

- 4 X Sets Road Train
- Side Tippers



## WATER TRUCKS

- 1 X 25,000L Potable Water Tanker
- 1 X 16,000L Mack Granite
- 1 X 30,000L Duraquip Semi Tanker



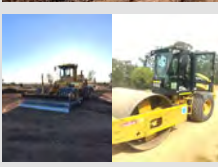
## LOADERS

- 1 X New Holland Skid Steer
- 1 X CAT 962G Loader
- 2 X CAT 980H Loader



## WATER MOXY'S

- 2 X 35,000L A40F Volvo
- 2 X 35,000L CAT 740



## ROLLERS & COMPACTORS

- 3 X Smooth Drum Roller
- 3 X Padfoot Roller/Grid Roller
- 2 X Multi Tyre Roller
- 3 X CAT Compactor

"Gore Earthmoving have carried out work for our family for many years, ranging from land clearing & gravel work, to all kinds of earthworks – both large and small.

More recently, we have had a major Irrigation Development Project to be done, consisting of Bankless Irrigation fields and plumbing. In total, around 800,000 cubic meters of earthworks.

I needed a company who:

- ⇒ Could take control of the project, liaise regularly on progress, costs, and potential issues.
- ⇒ Had the equipment to do the whole job.
- ⇒ Were flexible to work with and could work within a budget.

Putting it simply – Gore Earthmoving ticked all the boxes for our project, from start to finish, and it was great for them to finish the job without any unnecessary hassle.

I find this company very good to work with and provide good value for money and a quality job."

Simon Corish  
Corish Farms Pty Ltd



# MANAGEMENT SYSTEMS

## MANAGEMENT SYSTEMS:

Gore Earthmoving maintains an Integrated Management System (IMS) which has been written and designed to meet the guidelines of the following standards, Safety – ISO 45001:2018, Quality – ISO 9001:2015 and Environmental – ISO 14001:2015. Our primary focus is to deliver safety, quality, and environmental best outcomes. From design through to construction, we are committed to these values, along with a continual improvement mindset, with a clear vision to be recognized as a supplier of choice.

### Work Health & Safety:

Gore Earthmoving is committed to delivering industry best health and safety standards. This commitment will ensure that health and safety is the key priority in all aspects of our operations and in turn, protect the wellbeing of our employees and the interests of our clients. We value our people, contractors and suppliers, and we protect their health and safety by providing safe workplaces. Our commitment to these standards are through consultation with our internal teams and collaboration with external stakeholder groups.

### Environmental Management:

Gore Earthmoving is committed to managing and caring for the environment within all aspects of its operations and relevant business sectors. Our Environmental policy and plan are an integral part of our operation, with our objective to prevent environmental harm and fulfil our responsibilities to meet with relevant environmental legislation, local government policies, and client specific requirements and standards.

### Quality Management:

Gore Earthmoving is committed to delivering quality outcomes to our clients and making every effort to follow all agreed customer requirements along with statutory, regulatory, and legal obligations related to the service being offered. To achieve these objectives, we shall audit, monitor, and report on all service and quality performance key indicators, along with maintaining and continuously improving our Quality Management System, designed to satisfy the requirements of ISO 9001:2015.

### Risk Management:

Gore Earthmoving is committed to the systematic evaluation and management of risk throughout all aspects of our business. Strategic planning and risk management are used to further enhance our service offer for our clients. Aligning best practice risk management principles, throughout all aspects of our operations, ensures identified risk is properly and adequately managed. By recognizing and managing risk, we maximise commercial opportunities to enhance stakeholder value and deliver on our commitment to employees, customers, the environment and the community.

## INSURANCES:

Gore Earthmoving carries the following insurances:

- Work Cover
- Public Liability Insurance
- Vehicle and Equipment Insurance

**Gore Earthmoving** currently employs over 50 staff members including a dedicated Operations Team, leading hands, skilled and certified operators, experienced and qualified maintenance staff, apprentices and administration staff, we have the ability to put together a team with specific skills to compliment your project. With our roster system, we can deliver to specific time frames.

**We have a team of qualified and apprentice diesel fitters and boiler makers** as well as a fleet of service vehicles, giving us the ability to ensure minimal downtime on repairs & maintenance and can deploy our qualified tradesmen to site to complete any repairs as a priority when needed.



# OUR MANAGEMENT TEAM



## **MICK GORE - DIRECTOR**

**P: 0427 827 645 E: [MickG@goreearthmoving.com.au](mailto:MickG@goreearthmoving.com.au)**

Mick brings with him over 40 years experience in the earthmoving industry, starting as an Operator working for his parents in the 80's. With a background as a trade qualified boilermaker and a keen interest in all things mechanical, Mick has a keen eye across all facets of the business.

Mick took over as Sole Director of Gore Earthmoving in 2013 and has driven growth and strategic planning with a focus on safety, quality and well maintained equipment. Continued improvements to the business have facilitated the further development of our headquarters in Goondiwindi, with recent expansion to our holding yards and further building extensions and additions in order to continue to deliver what Gore Earthmoving is known best for - professional service with a personal approach.



## **GREG HILTON - GENERAL MANAGER**

**P: 0428 714 575 E: [GregH@goreearthmoving.com.au](mailto:GregH@goreearthmoving.com.au)**

With over 20 years in the earthmoving industry and a prior background in management within the fuel sector, Greg's skillset is extremely diverse. Greg is a multiskilled manager with a unique hands on approach. Greg is focused on the strategic development of the Company and this filters through to each and every project undertaken by Gore Earthmoving.

Greg's proven ability to drive growth, improve operations and implement strategic initiatives has been an integral part of the Gore management focus since starting with Gore in 2017. His passion for team development has seen the company build a diverse & multi-skilled, safety focused team.



## **GREG DALZIELL - HSEQ MANAGER**

**P: 0476 388 549 E: [GregD@goreearthmoving.com.au](mailto:GregD@goreearthmoving.com.au)**

With a unique background of more than 20-years management experience across the construction, energy and civil sectors, Greg has a passion for delivering Safety, Quality and Cost-benefit outcomes.

Focused on honest stakeholder engagement, attention to detail and a solution focused mindset, Greg has delivered a number of successful projects in the capacity of General Manager and Executive Operations Manager roles.

Underpinned by a management style that positively leads change, continual improvement and cross work group collaboration, Greg is highly skilled in: Work health and safety management, IMS development & integration, Business & Strategic planning, Project management & Contractual governance.



**Gore Earthmoving Pty Ltd**

ABN 34 162 713 091

48 Town Common Road

Goondiwindi QLD 4390

T | 07 4671 4911

[goreearthmoving.com.au](http://goreearthmoving.com.au)